

Lassiter

Freshman 101

School Counselors
(split by last name for all 4 years of High School)

A - C - Lindsey.Johnson@cobbk12.org
D - Ho - Brittany.Hughes@cobbk12.org
Hp - Mi - Michaela.Hall@cobbk12.org
Mj - Sc - Meghan.Ben@cobbk12.org
Sd - Z - Elizabeth.Clark@cobbk12.org

Graduation Requirements

- 4 English credits
 - 4 Math credits
 - 4 Science credits
 - 3 Social Studies credits
 - 3 World Language/Fine Art/Tech elective credits
 - 4 General Elective credits
 - Health/Personal Fitness
- 23 Total Credits



GPA Information

Lassiter GPA

A - 4.0 (90-100)
B - 3.0 (80 - 89)
C - 2.0 (74 - 79)
D - 1.0 (70 - 73)
F - 0 (69 & Below)

HOPE GPA

*Only includes academic classes

*NOT ON TRANSCRIPT

*Honors - No quality points

*Honors - Extra 0.5 quality point

*AP - Extra 0.5 quality point

*AP - Extra 1.0 quality point

*No weight higher than a 4.0

Promotion

- 10th Grade
 - 5 credits (1.0 math, 1.0 English, 1.0 science)
- 11th Grade
 - 10 credits (2.0 math, 2.0 English, 2.0 science)
- 12th Grade
 - 16 credits

Connect with Us



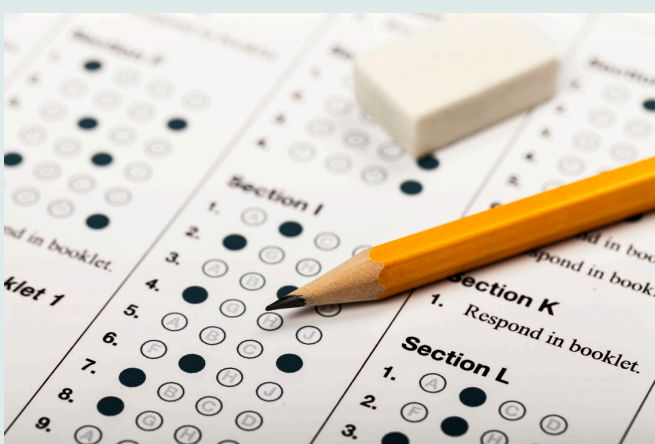
- lassitercounseling



9th Grade EOCs

- Biology (on level, Honors & STEM)
- Algebra I or Honors Algebra I

Exam counts for 10% of students final grade during Spring semester



Teacher Communication

- Reach out to your teacher - communication is KEY!
 - Firstname.Lastname@cobbk12.org
- ASK YOUR TEACHERS THE QUESTION!



Tutoring

All teachers offer help sessions either BEFORE or AFTER school - check their CTLS, outside their door or just ASK!

Parent & Student Vue

- Every enrolling adult should have an account set up
 - If you are new, use the same login you created when you enrolled
- Check regularly for grade and attendance updates
- Don't forget to opt in for a County issued laptop

Bell Schedule



ASE
(Mon., Wed., Thurs.)

8:15 - Warning

8:20-9:13 - 1st Period

9:19-9:47 - ASE

9:53-10:44 - 2nd Period

10:50-11:41 - 3rd Period

11:47-12:38 - 4th Period

12:44-1:35 - 5th Period

1:41-2:32 - 6th Period

2:38-3:30 - 7th Period

Advisement

(Tues. & Fri.)

8:15 - Warning

8:20-9:16 - 1st Period

9:22-9:34 -Advisement

9:40-10:33 - 2nd Period

10:39-11:32 -3rd Period

11:38-12:31 - 4th Period

12:37-1:30 - 5th Period

1:36-2:29 - 6th Period

2:35-3:30 - 7th Period

